

SPRING 2020 INNOVA-SHIP

WHERE **INNOVATION** AND
ENTREPRENEURSHIP COLLIDE

9-WEEK TRAINING INCLUDES:

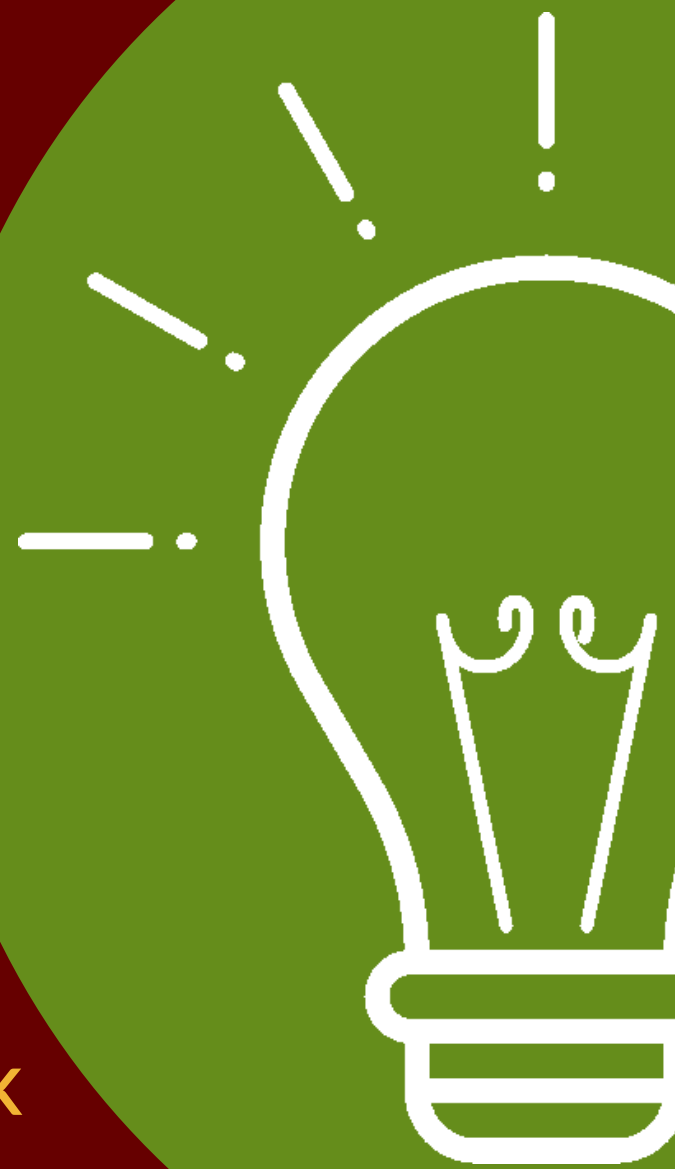
- IDENTIFYING FUNDING AND INVESTORS
(WITH EMPHASIS ON FEDERAL SBIR/STTR FUNDING)
- DEFINING THE TARGET MARKET/MARKET RESEARCH
- TESTING YOUR BUSINESS CONCEPT
- ENTERING AND CAPTURING THE MARKET
- PLANNING FOR FINANCIAL SUCCESS
- BUILDING YOUR TEAM
- INTELLECTUAL PROPERTY
- INVESTOR PRESENTATION DEVELOPMENT

STARTS TUESDAY, FEBRUARY 18, 2020

MEETS WEEKLY FROM 11:30 A.M. - 2:30 P.M. @ THE SIU RESEARCH PARK

OPEN TO SIU FACULTY, STAFF, STUDENTS, AND HIGH-TECH THINKERS AND
ENTREPRENEURS THROUGHOUT SOUTHERN ILLINOIS

FOR MORE INFORMATION OR TO APPLY, VISIT RESEARCHPARK.SIU.EDU



SCIENCE TECHNOLOGY ENGINEERING AGRICULTURE MATH BUSINESS

Individuals with disabilities welcome. Please contact Disability Support Services at 618/453-5738 in advance to request accommodations.

Funding provided by



U.S. Small Business
Administration

SIU
CARBONDALE

SOUTHERN ILLINOIS UNIVERSITY
RESEARCH PARK